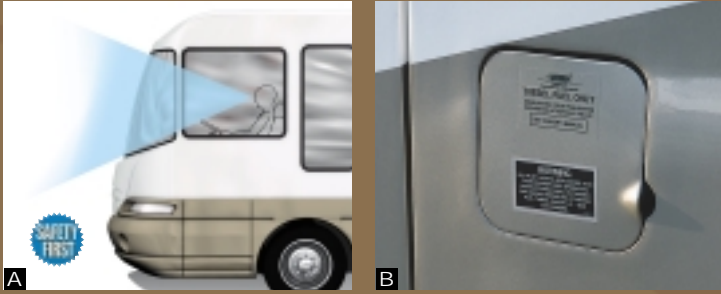


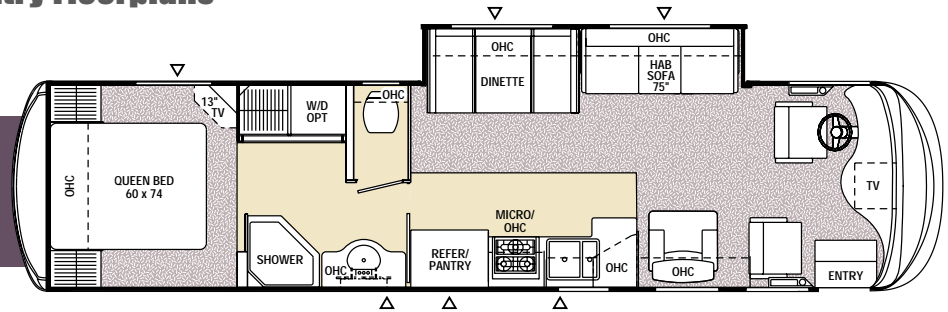
## Exterior Appeal...



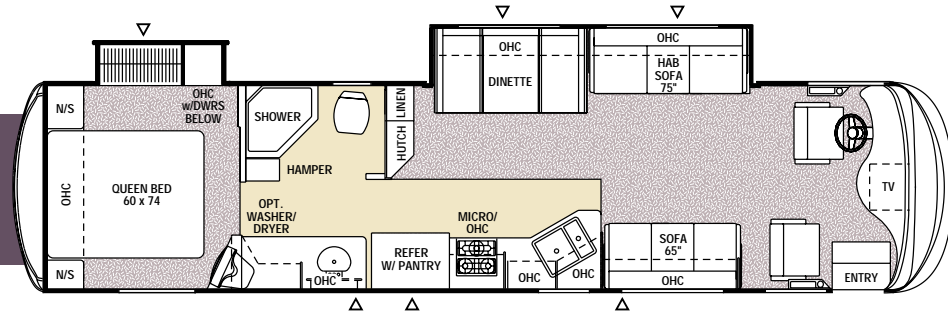
- A. The Sight Rite™ lower dash cowl is angled downward at 20 degrees for an increased line of sight that is closer to the front of the unit.
- B. No need to worry about maneuvering around a small gas station parking lot. Pull up to either side of the pump with dual fuel fills that are conveniently located on both sides of the unit.
- C. The No-Mess™ termination system is an easy to swivel boom arm located under the storage bay that provides a convenient storage location for the termination hose. Your storage bay stays cleaner and the hose can remain connected after use.
- D. The overhead mounted windshield wipers are mounted up high and out of the way to minimize any obstruction of view. They also offer superior water removal and a high line look.

## Cross Country Floorplans

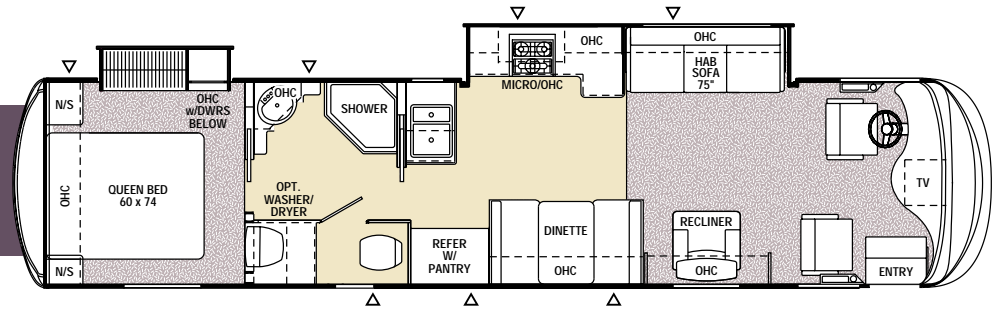
### 354MBS Mid Bath Slide Out



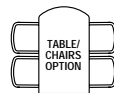
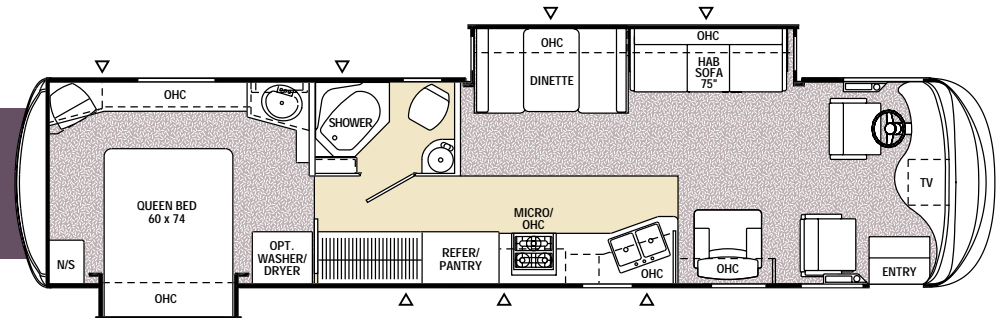
### 370DS Double Slide Out



### 372DS Double Slide Out



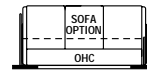
### 376DS Double Slide Out



Optional in all units



Optional only in the 354MBS



Optional only in the 372DS

INDICATES CARPETING

INDICATES OUTSIDE STORAGE LOCATION

# 2005 Cross Country Specifications

	Cross Country 354 MBS	Cross Country 370 DS	Cross Country 372 DS	Cross Country 376 DS
Chassis	Freightliner	Freightliner	Freightliner	Freightliner
Chassis Model	XC	XC	XC	XC
Engine Horsepower	300	300	300	300
Wheel Base	228"	228"	242"	242"
Rear Axle Ratio	4.78	4.78	4.78	4.78
Tire Size	235/80R22.5	235/80R22.5	235/80R22.5	235/80R22.5
GVWR (lbs.)	26,850	26,850	26,850	26,850
CW (lbs.)	20,285	21,088	21,427	21,352
GAWR Front (lbs.)	9,350	9,350	9,350	9,350
GAWR Rear (lbs.)	17,500	17,500	17,500	17,500
GCWR (lbs.)	33,000	33,000	33,000	33,000
Exterior Length	37'6"	37'6"	38'4"	38'4"
Exterior Height**	12'1"	12'1"	12'1"	12'1"
Exterior Width	8'6"	8'6"	8'6"	8'6"
Sleeping Capacity	5	5	5	4
Interior Width	96"	96"	96"	96"
Interior Height	79"	79"	79"	79"
Fuel Capacity (gal.)	90	90	90	90
Alternator Amps	160	160	160	160
Fresh Water Capacity (gal.)	80	80	80	80
Grey/Waste Water Capacity (gal.)	46/46	46/46	46/46	46/46
Water Heater Capacity (gal.)	6	6	6	6
LP Gas Capacity (lbs.)	174	174	174	174
Furnace Rating (x1000) BTU	40	40	40	40

\*\* = Includes clearance for roof A/C

**GVWR (Gross Vehicle Weight Rating):** The Maximum permissible weight of the unit, including the UVW plus all fluids, cargo, optional equipment and accessories. For safety and product performance, do not exceed the GVWR.

**CW (Curb Weight):** The weight of the unit without factory or dealer installed options, plus allowance for the weight of full fuel capacity. The "payload capacity" for all other fluids, cargo, occupants, optional equipment and accessories can be determined by subtracting the CW from the GVWR.

**GAWR (Gross Axle Weight Rating):** The total weight each front/rear axle, suspension and tire system is designed to carry. When loading the unit, care should be taken to balance cargo weight in consideration of the GAWRs.

**GCWR (Gross Combined Weight Rating):** The maximum total weight of the loaded unit, plus a tow vehicle. This includes the weight of both the unit and tow vehicle, fuel for each, all other fluids, cargo, occupants, optional equipment and accessories.

**Wider Widths:** Numerous Sportscoach floorplans feature the "wide body" design concept, which gives you significantly enhanced interior living space and innovative floorplans.

In making your purchase decision, you should be aware that a few states restrict access on some or all roads within the state to vehicles with a maximum 96" width, although special road usage permits may be available. Vehicles up to 102" in width are permitted in the vast majority of states. You should confirm the road usage laws in the states of interest to you before making your purchase decision. If width is of concern to you, we invite you to consider the broad array of other Coachmen models offered in the standard 96" width.

**IMPORTANT NOTE:** All capacities are approximate, and all dimensions are nominal. Sportscoach motorhomes are designed to allow for a wide variety of uses, extended trips with two people or short trips with multiple people. Accordingly, each unit allows ample room for sleeping, seating, fluids and cargo. While the customer is the beneficiary of this design, the customer also bears the responsibility to select the proper combination of passengers, cargo, load, and tow vehicle without exceeding the chassis weight capabilities. Consumer may need additional braking capacity to tow loads greater than 1,000 pounds.

Seat belts should always be worn for passenger safety. Seat belts are provided at most locations to allow convenience in selecting which seat to occupy. However, it is not intended that all seating positions equipped with a seat belt may be occupied while the vehicle is in motion, without regard to other weight factors.

All Sportscoach motorhomes are designed to ensure that the number of passengers allowed while the vehicle is in motion will always at least equal the stated sleeping capacity. Though extra seat belts may be provided, for your safety and the proper operation of your vehicle, limit your passengers to the number allowed by the Net Carrying Capacity of your vehicle.

All information contained in this brochure is believed to be accurate at the time of publication. However, during the model year, it may be necessary to make revisions and Sportscoach reserves the right to make all such changes without notice, including changes in prices, colors, materials, equipment and specifications, as well as the addition of new models and the discontinuance of models shown in this brochure. Therefore, please consult with your Sportscoach dealer and confirm the existence of any materials, design or specifications that are material to your purchase decision.

## Paint Options



Stormy Gray



Sand Castle



Charcoal Cast

# Standard Features

## INTERIOR APPOINTMENTS

- Soft Touch Padded Ceiling
- Hardwood Raised Panel Cabinet Doors
- Ashland Oak Wood Cabinetry
- Residential Metal Drawer Guides
- Techwood® Drawer Sides
- Linoleum Flooring (Kitchen & Bath)
- Night Shades Throughout
- Radius Slider Windows-Coach
- Jalousie Windows-Bedroom
- Deluxe Sun Visors
- Manual Pilot Seats w/Integrated 3-Point Seat Belt
- Sofa Sleeper (Off Door Side)
- Love Seat (Door Side 370DS)
- Stanford Booth Dinette
- Folding Stepwell Cover
- Swivel Chair w/Table (372DS)
- Swivel Chair (354MBS & 376DS)

## INTERIOR EQUIPMENT

- 27" Flatscreen Television-Coach
- AM/FM Cassette w/4 Speakers
- TV Antenna and Rotor Package
- Prewired for Satellite Dish
- Cable TV Jacks
- Phone Jack
- TV Cabinet in Bedroom
- LP Leak Alarm
- Smoke Detector
- Carbon Monoxide Detector
- Fire Extinguisher

## GALLEY

- Microwave Oven w/Range Vent & Light
- 3-Burner (High Output) Range w/21" Oven
- Large Double Door Refrigerator
- Freezer Shelf & Refrigerator Light
- Monitor Panel
- Laminate Countertops w/Deluxe Composite Sinks
- Kitchen Faucet w/Pullout Sprayer
- Silverware Drawer

## SLEEPING

- Queen Bed
- Deluxe Innerspring Mattress w/312 Coil
- Designer Headboard
- Bedsread and Pillow Shams
- Privacy Drape-Cab

## BATH AND WATER

- Porcelain Toilet
- One-Piece ABS Tub Surround (Except 376DS)
- Fiberglass Shower (376DS)
- Glass Shower Door
- Power Bath Vent
- 6-Gallon Gas/Electric Water Heater
- Pump Switch at Termination
- Demand Water Pump
- Medicine Cabinet
- Skylight Over Shower

## ELECTRICAL/HEATING/AC

- 50 Amp, Detachable Power Cord
- 55 Amp, 110/12-Volt Power Converter
- GFI Circuit
- Outside Receptacle (DS)
- 5.5KW LP Generator
- Emergency Start Switch
- Coach & Chassis Battery Disconnect
- Auxiliary Batteries
- Patio Light
- Rear Vision Camera
- 40,000 BTU E.I. Furnace
- In Floor Ducted Heat
- Low Profile 13,500 BTU Ducted Roof A/C
- 175 lb. LP Tank
- Prewired for Rear Roof Air Conditioner
- Fluorescent Lighting in Living Area

## AUTOMOTIVE/EXTERIOR

- Defroster Fans
- Telescoping Tilt Steering Wheel
- Cruise Control
- Dash Air Conditioning
- Exterior Mirrors w/Remote
- Auxiliary Driving Lights
- Dual Fuel Fills
- Automotive Undercoating
- Hydraulic Leveling Jacks
- Chassis Air Suspension
- Air Brakes
- 300 HP Cummins Rear Diesel Engine (Turbo Charged) (5 Speed Transmission)
- 22.5" Radial Tires
- Deluxe Radius Entrance Door w/Dead Bolt Lock
- Patio Awning
- Stainless Steel Wheel Inserts
- Front & Rear Mud Flaps
- Power Entrance Steps-Double
- Rubber Entry Step Treads
- Laminated Floor & Sidewalls
- Crowned, Laminated Roof – TPO
- Basement Floor Design
- Aluminum Compartment Doors
- Front & Rear Fiberglass Caps
- Graphics with Painted Skirt
- Exterior Grab Handle
- Rotocast Seamless Storage Compartments
- Roof Ladder
- Towing Hitch
- Owner's Information Guide

## Optional Features

- Air Horn
- Euro Chair w/Ottoman (Except 370DS)
- Computer Desk (354MBS)
- Residential Dinette w/4 Chairs
- Love Seat (372DS)
- 120V Energy Management System
- Home Theatre System w/DVD Player
- Day/Night Shades – Coach
- Convection Microwave
- Side-By-Side Refrigerator
- Satellite TV System<sup>4</sup>
- VCR Player
- DVD Player
- Deluxe AM/FM Stereo w/CD Player
- XFM Radio
- 20" Bedroom TV w/ Video Switch (372DS & 376DS)
- 14" Bedroom TV w/ Video Switch (354MBS & 370DS)
- Driver-Side Sun Shade
- Power Sun Visors
- 10 Gallon Gas/Electric Water Heater
- Combo: Washer and Dryer<sup>3</sup>
- Washer / Dryer Ready<sup>3</sup>
- 6-Way Power Pilot Seat w/Integrated 3-Point Seat Belt
- Fantastic Three-Speed Roof Vent
- 2nd Low Profile 13,500 BTU Ducted Roof A/C
- 6.5 KW LP Generator
- 7.5 KW Diesel Generator
- 600 Watt Inverter<sup>5</sup>
- Heated Exterior Mirrors with Remote
- Deluxe Entry Door Awning<sup>2</sup>
- Slide-Out Room Awning - Coach<sup>2</sup>
- Slide-Out Room Awning - Bedroom<sup>2</sup> (Except 354MBS)
- Rear Rock Guard
- CSA Upfit<sup>1</sup>

FOOTNOTES: (1) Mandatory For All Canadian Provinces (2) Not Available on Wide-Body Models Shipped to Canada (3) Includes Plumbing and 10-Gallon Water Heater (4) Not Available on Models Shipped to Canada (5) Will Power Televisions, VCR, & Satellite Receiver (6) Consists of Maintenance Manual, Trouble Shooting Guide, Warranty Information Booklet, and New Owners Video.



## Life in the Fast Lane

NASCAR driver Mike Wallace makes a Sportscoach Diesel motorhome his home on the road. The middle brother of auto racing's famed Wallace family, Mike is a veteran of NASCAR's racing circuit.